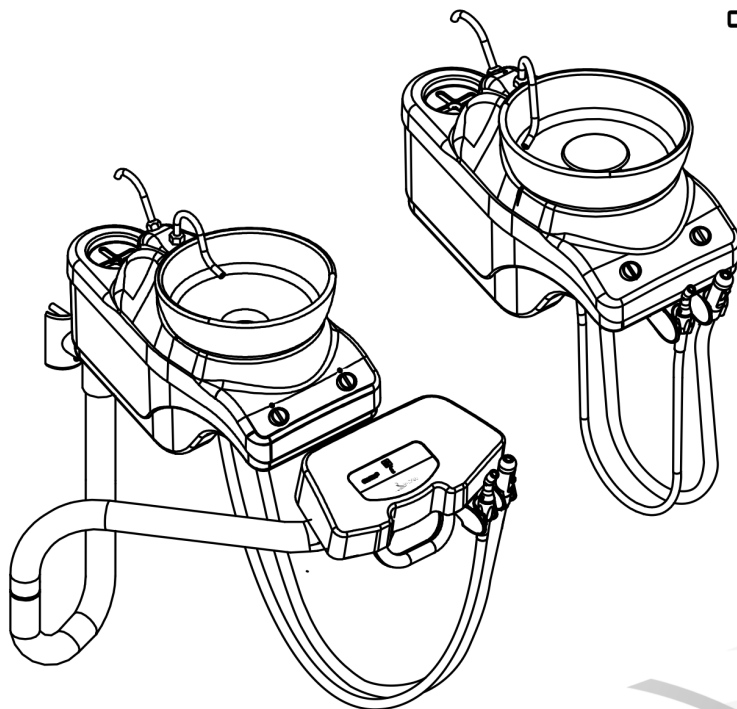


# Owner's Manual



**Syncrus L / L Alcance Water Unit**

(LE TV / L TV / LE 2T / L 2T / LE 2TV / L 2TV)

Code.: 300051459 Rev. 08

**GNATUS** 

# INDEX

---

Product Description.....03

Warranty of the Equipment .....06

General Data .....06

Technical Specifications .....12

Symbols .....13

Dimensions .....15

Operation .....17

Maintenance.....18

Precautions .....18

Cleaning .....19

Troubleshooting.....20

Final Considerations .....21

# DEAR CUSTOMER

---

Congratulations. You have made a good choice when you decided to buy a GNATUS QUALITY product comparable to the best products available in the World. This manual is a general presentation of your product and it will give you important details to help you to solve possible problems.

Please, read it and keep this with you.

## PRODUCT DESCRIPTION

---

The Water Unit is for odontological use, for auxiliary tasks like water supply to cup, cuspidor, saliva ejector or other accessories, for both left and right hands professionals, attached in the Dental Chair.

Valve to activate and adjustment of the water bowl.

Electrical commands for cup filling water flow, available in the Syncrus LE 2T / LE 2TV / LE TV Water Unit and the Syncrus LE Alcance 2T / LE Alcance 2TV / LE Alcance TV Water Unit.

Removable bowls with dimension around 220mm diameter round, and purpose perfect disinfections.

Upper unit's body appropriately located in order to be easy for the patient to spit, prioritizing ergonomics.

The assemble in tubular Steel built structure, with high shine smooth epoxy paint, polymerized in stove at 250°C, with phosphated treatment resistant to rust and cleaning materials, the structure is High-impact polystyrene coating and with round-edged. Tube round, light and flexible hoses, and quick-clamp connection system, which allows easy connection and disconnection without the need of tools.

Water flow adjustment system, which allows cup filling and bowl flush adjustment.

Automatic hand pieces selection, due to accurate pneumatic valve, making its use easy. Easy access centered front handle, which makes the articulated arm operation easy.

Front handle of easy access, facilitating the movement of the swivel arm.

Removable and autoclavable stainless steel bowl and cup-filler water spouts. Drain filter retains solid particles.

Easy to operate automatic suction system, which guarantees and excellent performance, improving the Doctor's operative field and reducing the risk of contamination by the spray and improving the patient's comfort.

High power ejectors with electrical activation of a low individual voltage, providing lightness and accuracy upon activation (available in the Syncrus L/LE Alcance 2T Water Units).

**Note:** Give preference to hand pieces and peripherals developed in accordance with requirements of directive 93/42/EEC (with CE mark).

ISO 9001/2000 and ISO 13485/2003 Quality System, assuring the products are manufactured under standart procedures.

Products manufactured in agreement with RDC-59 - ANVISA (Sanitary Surveillance National Agency) with guarantees accomplishment to the sanitary legislation according to BPF (Good Manufacturing Procedures). In order to comply with directive 93/42/EEC for CE Mark purpose, it is defined that the life span of this product is estimated in 05 years provided that the enduser follows the requirements and instructions of this manual.

### IMPORTANT:

- This equipment is for dental use use only. It must be operated and utilized by specialized professional (certified professional, according to the legislation of the country) and following the instructions of the manual. The operation of the equipment required, for the professional, the utilization of correct instruments and it should to be in perfect conditions of the use, and to protect the professional, the patients and others, in the eventual danger situation.

- This equipment can't be used in the presence of inflammable anesthetics or products that may cause explosion.

# PRODUCT DESCRIPTION

---

- After finish life-cycle of the equipment, this equipment is throw way, so it should to be destroyed in appropriate area (according to the legislation of the country).

- To guarantee the safe functioning of your equipment, use only the assemble configurations (Dental Chair, Dental and Water Units and Dental Light) supplied by Gnatus authorized Dealers / Technical Assistance.

The Water Units are composed according to list below:

## **Water Unit Syncrus L Alcance 2T V**

- 2 Ejectors type Venturi

## **Water Unit Syncrus LE Alcance 2T V**

- 2 Ejectors type Venturi

## **Water Unit Syncrus L Alcance 2T**

- 1 Ejector type Venturi

- 1 Bigger ejector (11mm) for Vacuum Pump

## **Water Unit Syncrus LE Alcance 2T**

- 1 Ejector type Venturi

- 1 Bigger ejector (11mm) for Vacuum Pump

## **Water Unit Syncrus Alcance L E TV**

- 1 Ejector type Venturi

## **Water Unit Syncrus Alcance L TV**

- 1 Ejector type Venturi

## **Water Unit Syncrus L E 2T**

- 1 Ejector type Venturi

- 1 Bigger ejector (11mm) for Vacuum Pump

## **Water Unit Syncrus L E 2TV**

- 2 Ejector type Venturi

## **Water Unit Syncrus L 2T**

- 1 Ejector type Venturi

- 1 Bigger ejector (11mm) for Vacuum Pump

## **Water Unit Syncrus L 2TV**

- 2 Ejector type Venturi

## **PRODUCT DESCRIPTION**

---

### ***Water Unit Syncrus L E TV***

- 1 Ejector type Venturi

### ***Water Unit Syncrus L TV***

- 1 Ejector type Venturi

## **WARRANTY OF THE EQUIPMENT**

---

This warranty covers product's manufacturing faults for the warranty period and standards specified on the Warranty Certificate. The Warranty Certificate is attached to product, and must be completed by the authorized technician when equipment is installed.

Doubts and information: GNATUS Call center (55-16) 2102-5000.

## **GENERAL DATA**

---

### ***Maintenance of the equipment***

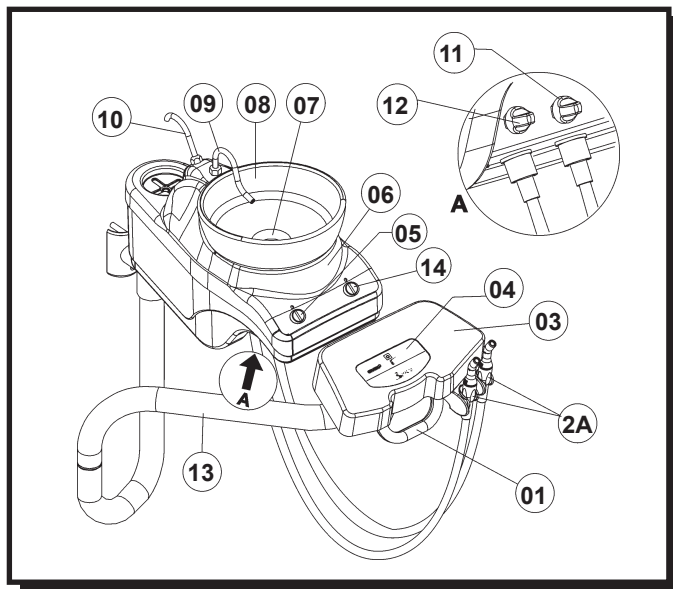
The equipment doesn't need preventive maintenance, however when there is any problem that this manual can't solve, ask for an authorized Gnatus technician.

### ***List of pieces and circuit scheme***

Gnatus Company declares that the supply of the circuit scheme, list of pieces or any other information that propitiate technical attendance for the user, can be request if there is an agreement between the user and Gnatus Company.

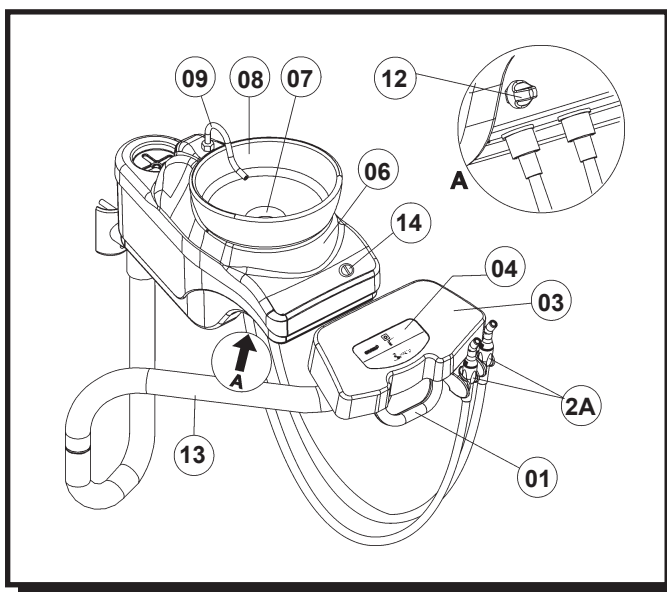
# GENERAL DATA

## Syncrus LE Alcance 2T V



- 01 - Handle
- 2A - Ejector type Venturi
- 03 - Alcance lid
- 04 - Alcance panel
- 05 - Activate water Cup filling
- 06 - Water unit body
- 07 - Drain plug
- 08 - Bowl
- 09 - Bowl flush spout
- 10 - Water cupfiller conductor
- 11 - Cupfiller flush adjustment
- 12 - Activate and adjustment of the Bowl's water
- 13 - Alcance armrest
- 14 - Drive button of the water in the basin.

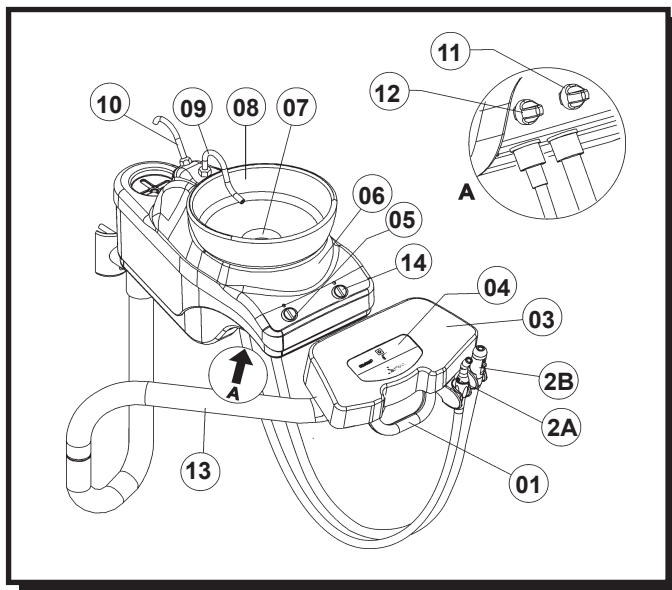
## Syncrus L Alcance 2T V



- 01 - Handle
- 2A - Ejector type Venturi
- 03 - Alcance lid
- 04 - Alcance panel
- 06 - Water unit body
- 07 - Drain plug
- 08 - Bowl
- 09 - Bowl flush spout
- 12 - Activate and adjustment of the Bowl's water
- 13 - Alcance armrest
- 14 - Drive button of the water in the basin.

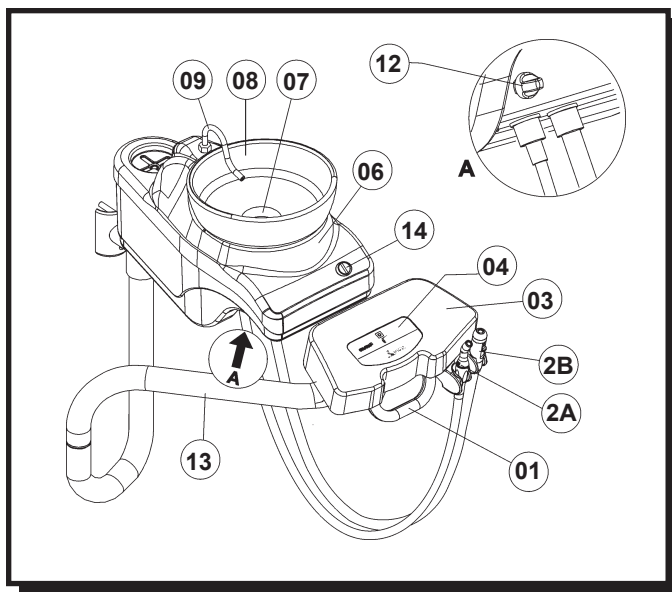
# DADOS GERAIS

## Syncrus LE Alcance 2T



- 01 - Handle
- 2A - Ejector type Venturi
- 2B - Bigger ejector (11mm) for Vacuum Pump
- 03 - Alcance lid
- 04 - Alcance panel
- 05 - Activate water Cup filling
- 06 - Water unit body
- 07 - Drain plug
- 08 - Bowl
- 09 - Bowl flush spout
- 10 - Water cupfiller conductor
- 11 - Cupfiller flush adjustment
- 12 - Activate and adjustment of the Bowl's water
- 13 - Alcance armrest
- 14 - Drive button of the water in the basin.

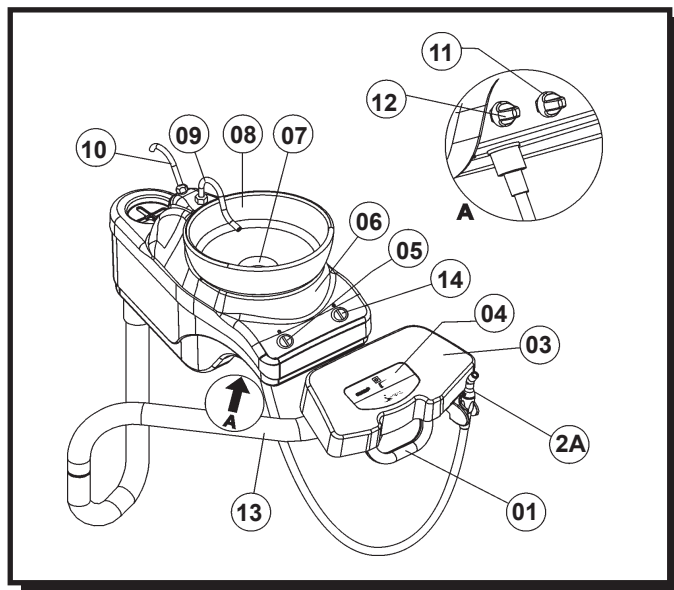
## Syncrus L Alcance 2T



- 01 - Handle
- 2A - Ejector type Venturi
- 2B - Bigger ejector (11mm) for Vacuum Pump
- 03 - Alcance lid
- 04 - Alcance panel
- 06 - Water unit body
- 07 - Drain plug
- 08 - Bowl
- 09 - Bowl flush spout
- 12 - Activate and adjustment of the Bowl's water
- 13 - Alcance armrest
- 14 - Drive button of the water in the basin.

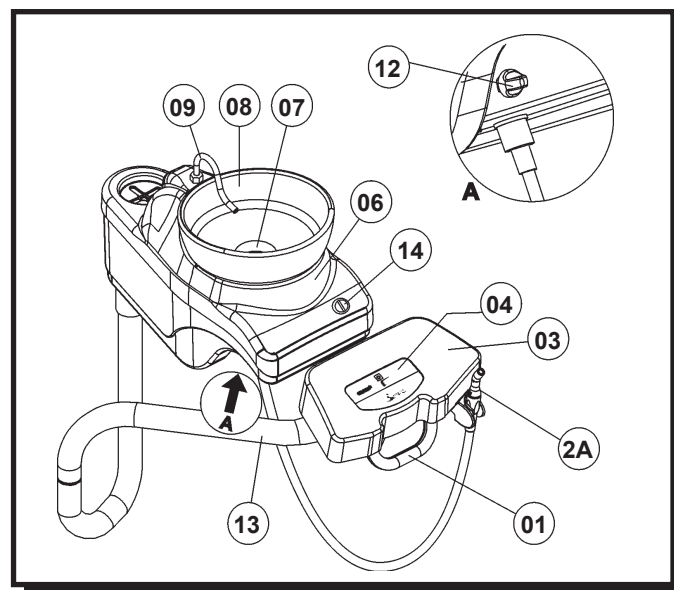
# GENERAL DATA

## Syncrus LE Alcance TV



- 01 - Handle
- 2A - Ejector type Venturi
- 03 - Alcance lid
- 04 - Alcance panel
- 05 - Activate water Cup filling
- 06 - Water unit body
- 07 - Drain plug
- 08 - Bowl
- 09 - Bowl flush spout
- 10 - Water cupfiller conductor
- 11 - Cupfiller flush adjustment
- 12 - Activate and adjustment of the Bowl's water
- 13 - Alcance armrest
- 14 - Drive button of the water in the basin.

## Syncrus L Alcance TV

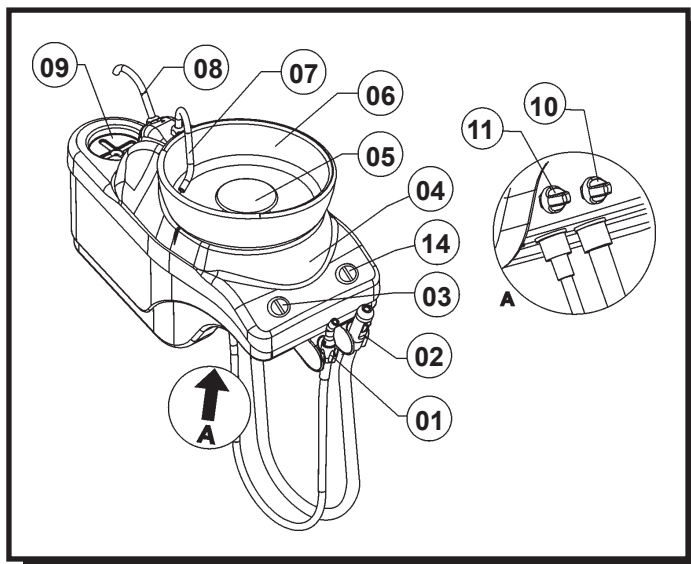


- 01 - Handle
- 2A - Ejector type Venturi
- 03 - Alcance lid
- 04 - Alcance panel
- 06 - Water unit body
- 07 - Drain plug
- 08 - Bowl
- 09 - Bowl flush spout
- 12 - Activate and adjustment of the Bowl's water
- 13 - Alcance armrest
- 14 - Drive button of the water in the basin.



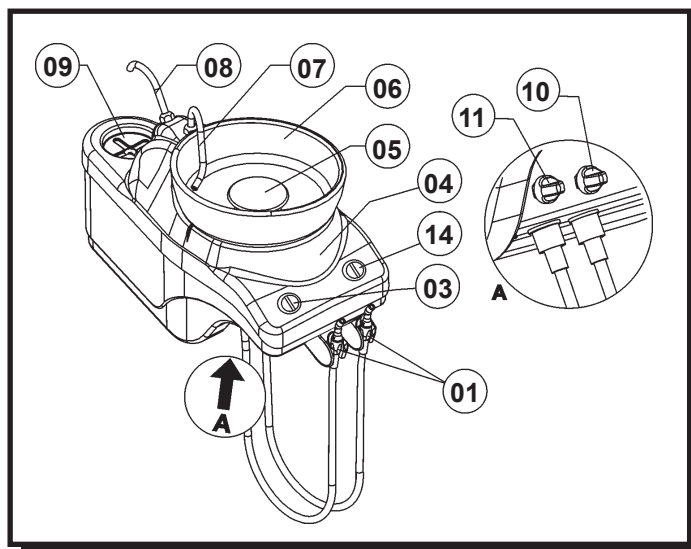
# GENERAL DATA

## Syncrus L E 2T



- 01 - Ejector type Venturi
- 02 - Ejector for Vacuum Pump
- 03 - Activate water Cup filling
- 04 - Water unit body
- 05 - Drain plug
- 06 - Bowl
- 07 - Bowl flush spout
- 08 - Water cup filling spout
- 09 - Cup holder
- 10 - Adjustment of the Cup filling water flow
- 11 - Activate and adjustment of the Bowl's water
- 14 - Drive button of the water in the basin.

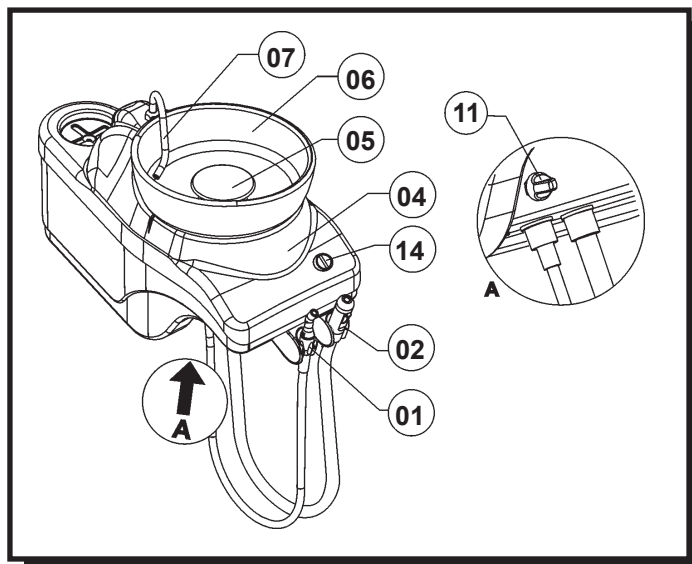
## Syncrus L E 2TV



- 01 - Ejector type Venturi
- 03 - Activate water Cup filling
- 04 - Water unit body
- 05 - Drain plug
- 06 - Bowl
- 07 - Bowl flush spout
- 08 - Water cup filling spout
- 09 - Cup holder
- 10 - Adjustment of the Cup filling water flow
- 11 - Activate and adjustment of the Bowl's water
- 14 - Drive button of the water in the basin.

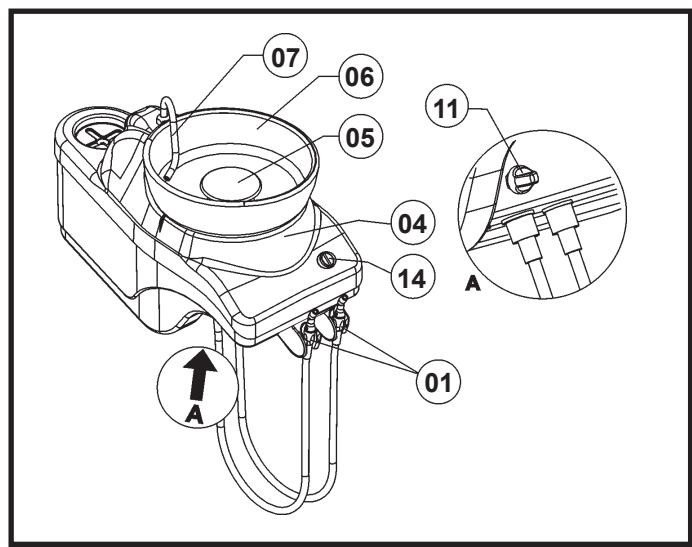
# GENERAL DATA

## Syncrus L 2T



- 01 - Ejector type Venturi
- 02 - Ejector for Vacuum Pump
- 04 - Water unit body
- 05 - Tampa do ralo
- 06 - Bowl
- 07 - Bowl flush spout
- 11 - Activate and adjustment of the Bowl's water
- 14 - Drive button of the water in the basin.

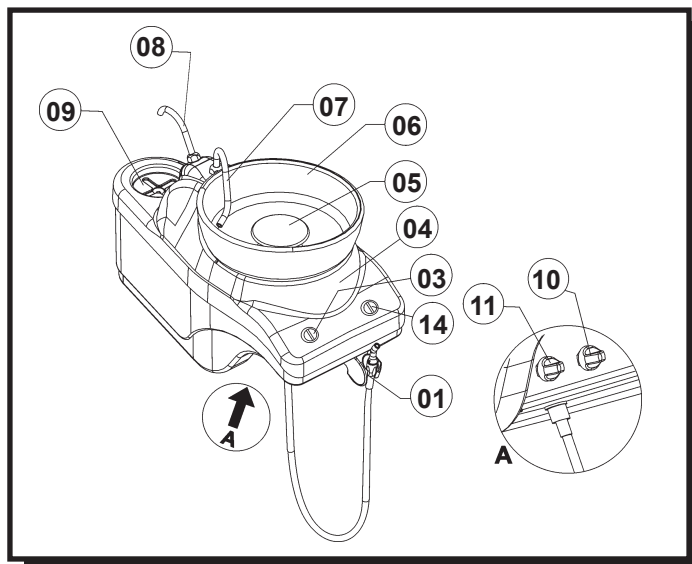
## Syncrus L 2TV



- 01 - Ejector type Venturi
- 04 - Water unit body
- 05 - Drain plug
- 06 - Bowl
- 07 - Bowl flush spout
- 11 - Activate and adjustment of the Bowl's water
- 14 - Drive button of the water in the basin.

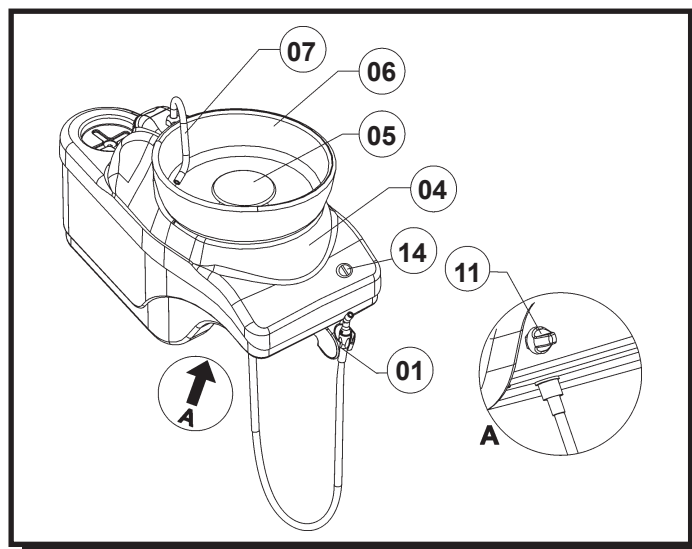
# GENERAL DATA

## Syncrus L E TV



- 01 - Ejector type Venturi
- 03 - Activate water Cup filling
- 04 - Water unit body
- 05 - Drain plug
- 06 - Bowl
- 07 - Bowl flush spout
- 08 - Water cup filling spout
- 09 - Cup holder
- 10 - Adjustment of the Cup filling water flow
- 11 - Activate and adjustment of the Bowl's water
- 14 - Drive button of the water in the basin.

## Syncrus L TV



- 01 - Ejector type Venturi
- 04 - Water unit body
- 05 - Drain plug
- 06 - Bowl
- 07 - Bowl flush spout
- 11 - Activate and adjustment of the Bowl's water
- 14 - Drive button of the water in the basin.

# TECHNICAL SPECIFICATIONS

- **Product classification:**  
In compliance with  
NBR IEC 60601-1
- **Inlet air pressure**  
80 PSI (5,52 BAR)
- **Inlet air pressure - Syringe**  
40 PSI (2,76 BAR)
- **Air**  
Use dry and filtered air
- **Electromagnetic compatibility**  
This product was tested and approved in compliance with the following standards:  
EN 60601-1 (1990);  
Amendment 1 EN 60601-1 (1992);  
Amendment 2 EN 60601-1 (1995);  
Amendment 13 EN 60601-1 (1995);  
EN 60601-1-2 (2001);
- **Power inlet**  
12V~ and 24V~ (from Syncrus chair)
- **Degree of protection against electric shock:**  
B type
- **Electric shock protection type:**  
Class one equipment.
- **Water leak protection**  
IPX 0
- **Operation mode**  
Continuous with intermittent load
- **Application together with anesthetic products that could be inflammable in the presence of air, oxygen or nitrous oxide:**  
Not recommended

## Net Weight

Syncrus L E Alcance 2T Water units .....	8,7 kg
Syncrus L E Alcance 2TV Water units .....	8,7 kg
Syncrus L Alcance 2T Water units .....	8,7 kg
Syncrus L Alcance 2TV Water units .....	8,7 kg
Syncrus LE Alcance TV Water units .....	8,7 kg
Syncrus L Alcance TV Water units .....	8,7 kg
Syncrus L E 2T Water units .....	5,3 kg
Syncrus L E 2T V Water units .....	5,3 kg
Syncrus L 2T Water units .....	5,3 kg
Syncrus L 2TV Water units .....	5,3 kg
Syncrus L E TV Water units .....	5,3 kg
Syncrus L TV Water units .....	5,3 kg

## Gross Weight

Syncrus L E Alcance 2T Water units .....	11,7kg
Syncrus L E Alcance 2TV Water units .....	11,7kg
Syncrus L Alcance 2T Water units .....	11,7kg
Syncrus L Alcance 2TV Water units .....	11,7kg
Syncrus LE Alcance TV Water units .....	11,7kg
Syncrus L Alcance TV Water units .....	11,7kg
Syncrus L E 2T Water units .....	7,3 kg
Syncrus L E 2T V Water units .....	7,3 kg
Syncrus L 2T Water units .....	7,3 kg
Syncrus L 2TV Water units .....	7,3 kg
Syncrus L E TV Water units .....	7,3 kg
Syncrus L TV Water units .....	7,3 kg

## Standards

This equipment was designed, manufactured and tested in compliance with the following standards:

- NBR-IEC série 601-1 Equipamento Eletromédico - Parte 1: Prescrições gerais para segurança;
- EN 980:2003 (Ed. 2) - Graphical symbols for use in the labelling of medical devices;
- ISO 14971 - Medical devices - application of risk management medical devices;
- ISO 9687: 1993 - Dental equipment - graphical symbols;
- ISO 7494 - Norma dental units;
- ISO 13485-2 - Quality systems - medical devices;
- ISO 780 - Packaging - pictorial marking for handling goods;
- ISO 11144 - Norma dental equipment - connections for supply and waste lines;

## Special providence or particular conditions for installation

- Check the electric net, it must be compatible with the specified one in the equipment.
- Verify the thread earth, it must be turned off correctly.

**OBS:** These information also make part of the Manual of Installation and Maintenance of the equipment that can be found with the authorized Gnatus technician.

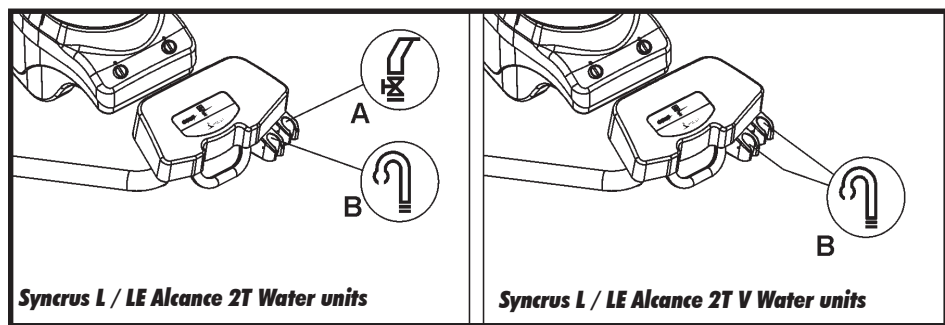
# TECHNICAL SPECIFICATIONS

## Transport and storage conditions

The equipment must be transported and stored with the following observations:

- Carefully, should not suffer drop and neither receive impact.
- With the side of the arrow upward.
- With humidity protection, not to expose to rains, sparkling of water or humidified floor.
- With temperatures from -12°C to 50°C.
- Maximum stacking indicates on the packaging the number of boxes which can be stacked during the transportation and storage.

## Hand pieces position



A - Ejector for Vacuum Pump

B - Ejector type Venturi

## Product symbols



Bowl's water flow



Type B equipment



Ejector for Vacuum Pump



Cup filling.



Warning - Consult the manual



Ejector type Venturi



Landing (in many parts of the equipment) indicates the condition of being landed.



Authorized representative in the European Community

# TECHNICAL SPECIFICATIONS

## Packing symbols



Maximum stacking determines the maximum number of boxes which can be stacked during the transportation and storage.



Packing to be transported and / or stored avoiding humidity, rains and wet floor



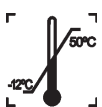
Packing to be transported and / or stored with the harrows up



The packing must be stored and transported away from direct sun light exposure



Packing to be transported and / or stored with care (should not suffer drop and neither receive impact)



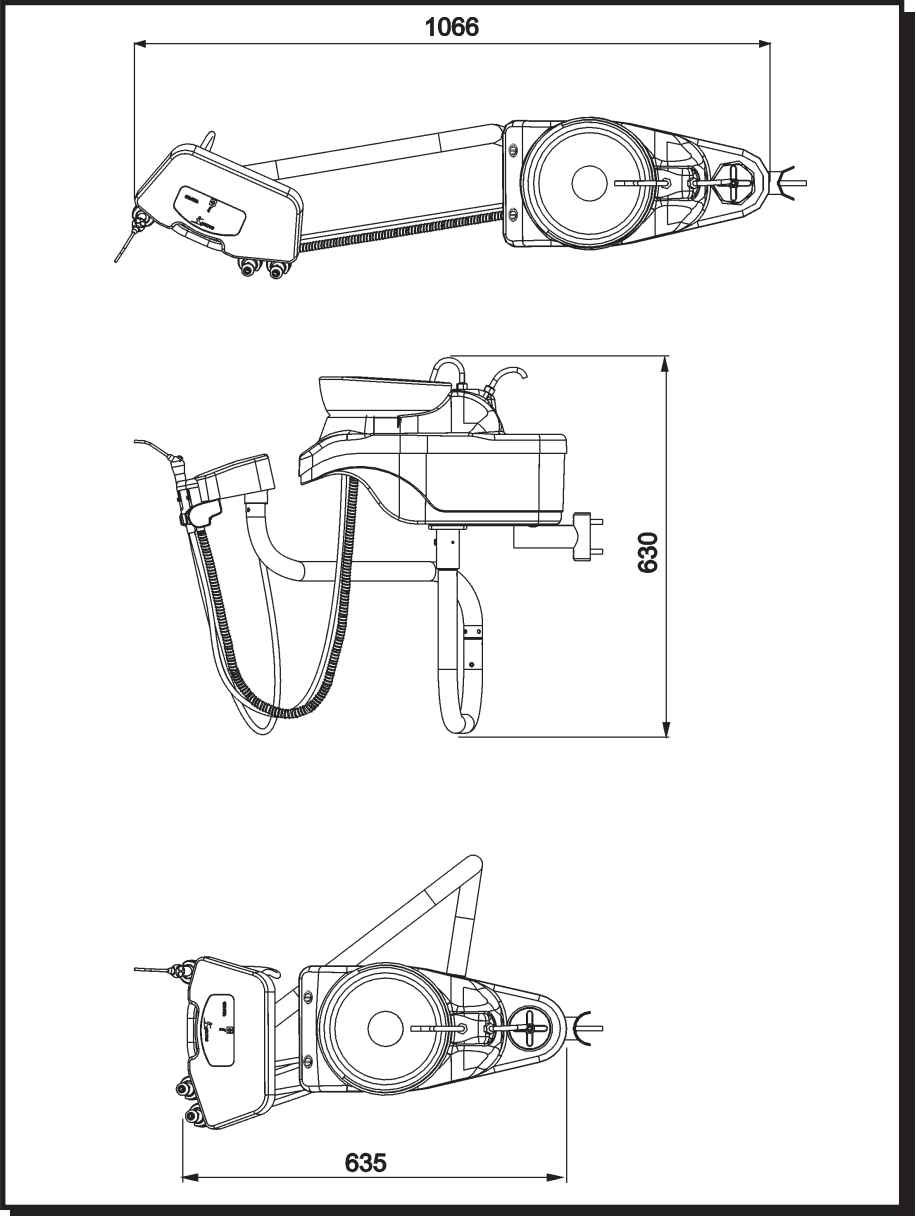
Temperature limit for the packing to be stored or transported

## Content of accessible and non-accessible demarcations

FABRICANTE E RESPONSÁVEL PELA GARANTIA			MANUFACTURER AND RESPONSIBLE FOR THE WARRANTY			FABRICANTE Y RESPONSABLE POR LA GARANTIA		
<b>GNATUSO</b> GNATUS EQUIPAMENTOS MÉDICO-ODONTOLÓGICOS LTDA. Rod. Abrão Assed, Km 53+450m - Ribeirão Preto - SP - Brasil								
APARELHO	EQUIPMENT	APPARATO	OPERAÇÃO			OPERATION		
			CONTÍNUO, COM CARGA INTERMITENTE CONTINUOUS, WITH INTERMITTENT LOAD - CONTINUO, CON CARICA INTERMITENTE Fotopolimerizador - Contínuo, com carga intermitente Curing Light - Continuous, with intermittent load - Lámpara de Fotocurado Contínuo, con carga intermitente T. ON: 90 s. - T. OFF: 90 s.					
NÚMERO DE REGISTRO ANVISA			EQUIPAMENTO DE CLASSE I CLASS I EQUIPMENT EQUIPAMIENTO DE CLASSE I					
EC REP Obelis S.A., Boulevard Général Vahis 53 1030 Brussels, Belgium Tel: 32 2 732.59.54 Fax: 32 2 732.60.03 E-mail: mail@obelis.net								

# TECHNICAL SPECIFICATIONS

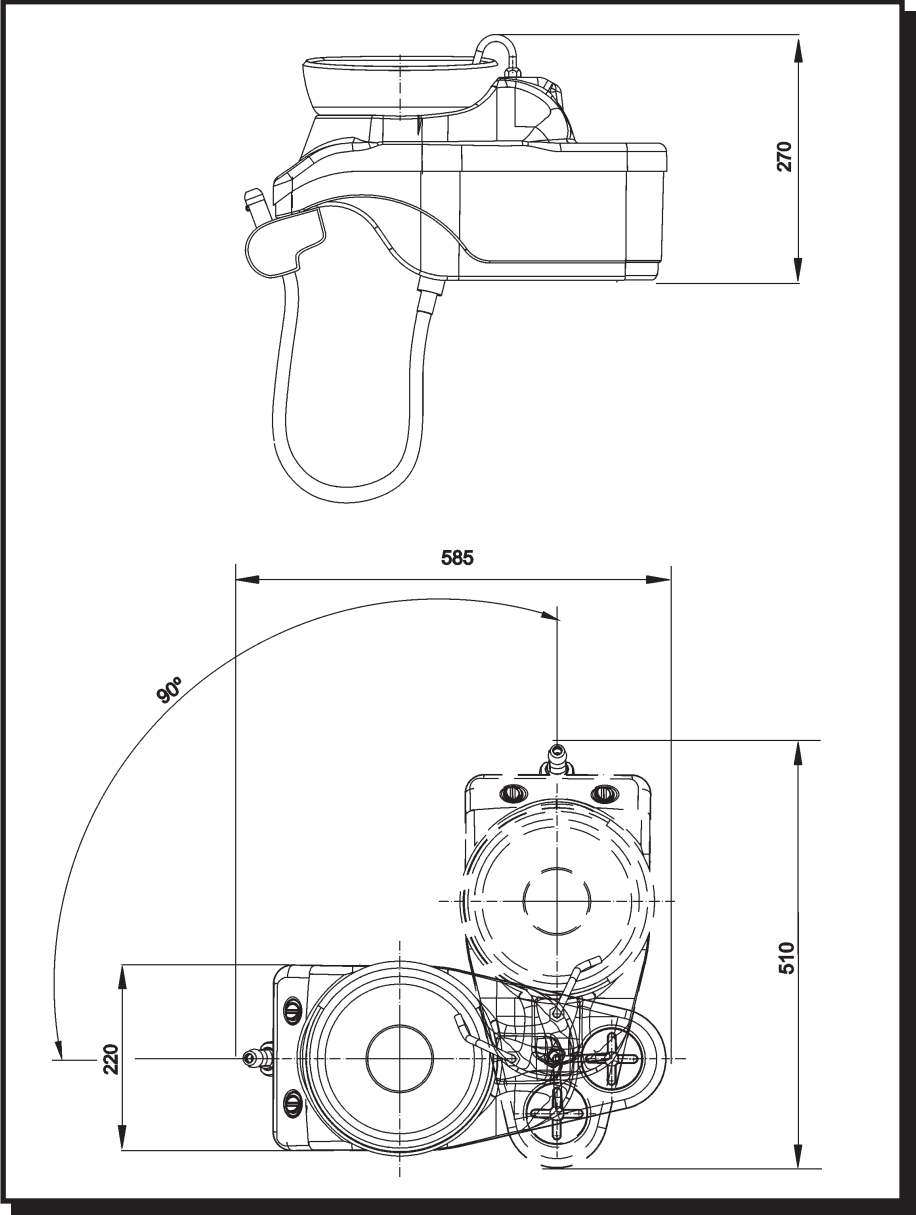
## Dimensions (mm)



**Note:** Drawing above represents a Syncrus L E Alcance Water Unit. All other models have identical dimensions.

# TECHNICAL SPECIFICATIONS

## Dimensions (mm)



**Note:** Drawing above represents a Syncrus LE TV Water Unit. All other models have identical dimensions.

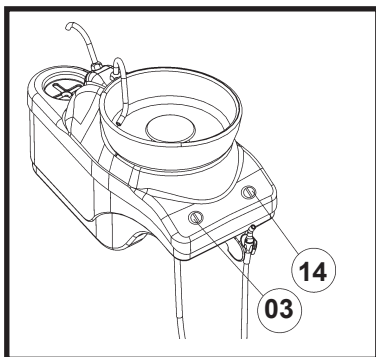


## OPERATION

### **Driving to the water in the basin and cupfiller**

In order to activate the water outflow in the cup filler, maintain the button 03 pressed until obtaining the quantity desired.

Para acionar a água na bacia pressione a tecla 14, para de desacionar pressione-a novamente.



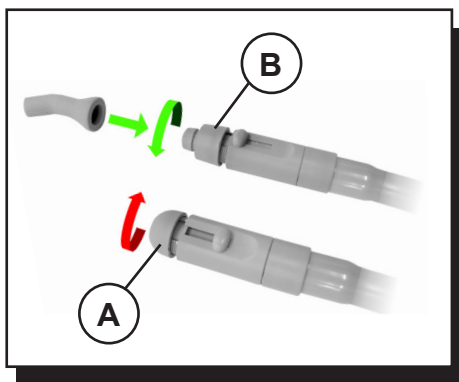
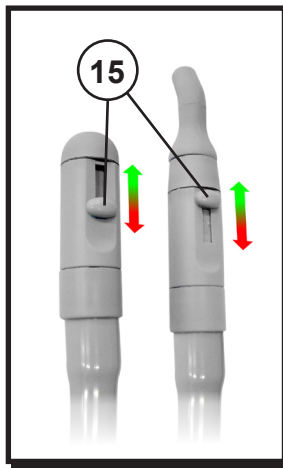
### **Ejectors operation**

The ejectors (Venturi) start working automatically when retired from the tips support The BV ejectors feature suction flow adjustment, and its regulated moving the lever (15) located at the ejector up or down.

### **Replacement of the standard of cannula coupling**

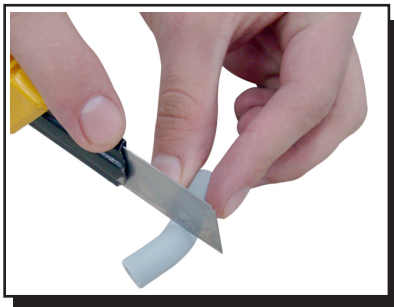
If there is the necessity of using the 6.5mm cannula in the BV suctor, make the replacement of the cannula coupling, as the procedure below:

- Remove the coupling of 11 mm (A) by unscrewing it from.
- Screw the coupling of 6.5 mm (B) in the aspirator BV set and attach the coupling tube.



### **Coupling of tube of 6.5 mm**

The curve of the coupling of the cannula was designed for better handling, but can also be cut at the location indicated with the aid of a knife.

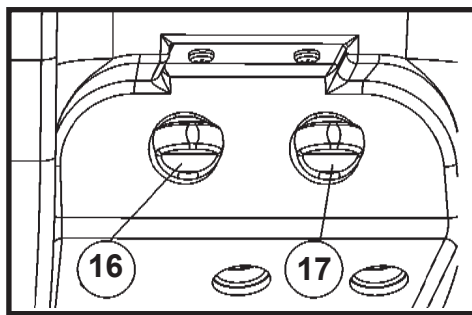


# OPERATION

## Water flow adjustment

- Bowl flush adjustment (16).
- Cup filler adjustment (17).

To increase flow, turn it anticlockwise, to decrease, turn in clockwise.



## Recommendations for the dental equipment maintenance.

Your Gnatus equipment has been designed and developed according to the standards of modern technology. Similarly to other kinds of equipment, it requires special care, which is many times neglected due to several reasons and circumstances.

Therefore, here are some important reminders for your daily routine. Try to follow these simple rules, which will save you a lot of time and will avoid unnecessary expenses once they start making part of your working procedure.

# MAINTENANCE

## Precautions

- ⚠️ Certify the correct voltage when you switch on your apparatus at the electricity.
- The plastic parts can't be in contact with most chemical substances used in dentistry treatments, i.e. acids, mercury, acrylic liquids, amalgams, etc.
- Whenever off duty turn off the main switch.

## Cleaning:

Gnatus suggests performing a daily suction of the clearance and disinfectant solution, avoiding the risk of cross contamination and increasing equipment service life. To perform the disinfection of your equipment we recommend the use of the "Sugclean" (MS Reg. No.: 31.080.003-2) product.

• **Indication:** It is indicated for clearance of sucker and hose suction system. It is important to perform the suction solution in all suction terminals, which it is also important to be open. Then, remove suckers from hose for asepsis.

• **Preparing the Solution:** Add "Sugclean" 30mL in 1 liter of water. Aspirate the solution with maximum power of the suckers, and also put the liquid in the water unit bowl.

In the first use of "Sugclean" product, we suggest adding 60mL of concentrated product in 1 liter of water during the first 5 days in order to remove accumulated residues.

### • Composition:

- Active Drug: Phosphoric Acid 13.6%
- Excipients: Isopropyl Alcohol, Acidulant, Dye and Thickener.

**Warning:** do not use foaming product.

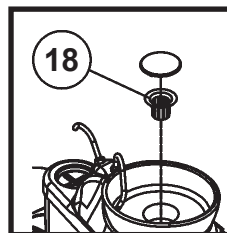
**NOTE:** The registration at the Ministry of Health of the "Sugclean" is executed separately from the product described in this manual, as the "Sugclean" is not manufactured by Gnatus.



# MAINTENANCE

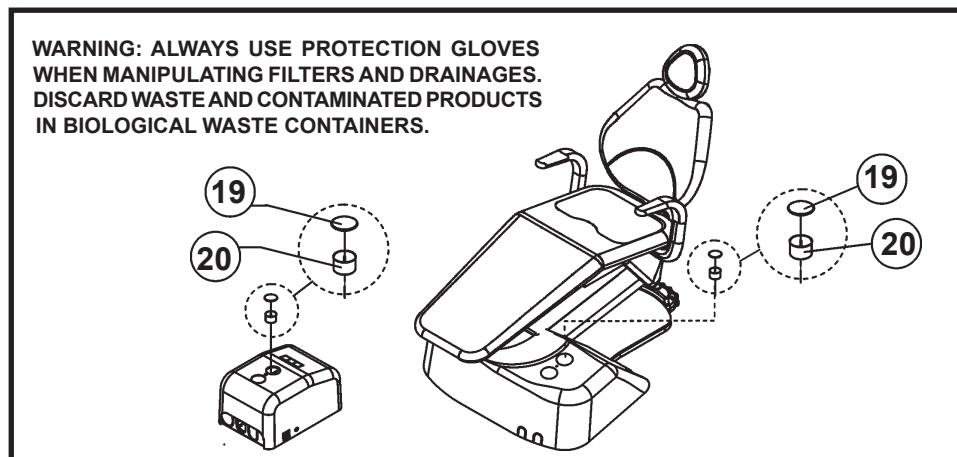
## Cleaning of the drain

Pull the drain (18) with a tweezer, clean.



## Cleaning of the sucker and filters

After the suction of the solution through the suctor, take the lid (19) and the filter (20) and wash them in running water.



**WARNING: ALWAYS USE PROTECTION GLOVES WHEN MANIPULATING FILTERS AND DRAINAGES. DISCARD WASTE AND CONTAMINATED PRODUCTS IN BIOLOGICAL WASTE CONTAINERS.**

## Basin cleaning

In order to obtain better results in the clean the bowl in your water unit, we strong recommedn the use of the product “**Easy-Off Bang**” or similar, n° Reg. MS: 3.00227-0.

**Chemical composition:** Glycolic Acid, Maleic Anhydride, Citric Acid, Ethoxyled Fatty Alcohol, Essence and Water.

Apply the “**Easy-Off Bang**” in the water unit bowl along with a smooth cloth up to clean it.

If you want additional information regarding cleanliness, please look at the instructions from the product.



# MAINTENANCE

## Cleaning the equipment

To clean the equipment, we recommend the use of "BactSpray (Reg n° MS: 3.2079.0041.001-5) or any other similar product:

**Active component:** Benzalkonium chloride (tri-quaternary ammonium)

Solution 50%..... 0.329%

**Chemical composition:** Butyl Glycol, Decyl polyglucose, Sodium Benzoate, Sodium Nitrate, Essence, Deodorized Propane / Butane, demineralized Water.

For more information concerning cleaning procedures, see manufacturer's instructions.

### WARNING:

- This product can also be used to clean and disinfect the water unit's sink.
- In order to prevent risks and damages to equipment, make sure that the liquid does not enter into the unit.
- The application of other solvent-based cleaning products or sodium hypochloride isn't recommended, because they may damage the equipment.



## TROUBLESHOOTING

<b>Problem</b>	<b>Probable cause</b>	<b>Solution</b>
<b>Water unit</b>  - Ejector without suction	<ul style="list-style-type: none"><li>- Insufficient air pressure from compressor.</li><li>- Vacuum pump disconnected.</li><li>- Filter clogged with particles.</li><li>- Filter lid misplaced.</li> <li>- Chair's fuse is burned</li><li>- Chair's main switch is turn off</li></ul>	<ul style="list-style-type: none"><li>- Adjust air flow.</li> <li>- Switch the vacuum pump on</li><li>- Remove and clean filter.</li><li>- Remove lid and place it correctly.</li><li>- Replace the chair's fuse</li><li>- Turn on chair's switch</li></ul>
- Bowl's water flow and cup filling are not operating	<ul style="list-style-type: none"><li>- Lack of water</li><li>- Water valve is closed</li><li>- Power cut</li><li>- Chair's fuse is burned</li><li>- Chair's main switch is turn off</li></ul>	<ul style="list-style-type: none"><li>- Check the water supply</li><li>- Open the water valve</li><li>- Check the energy supply</li><li>- Replace the chair's fuse</li><li>- Turn on chair's switch</li></ul>

### ATTENTION:

Any other problem that could happen with its equipment, should only be repaired by an authorized technician Gnatus.

The bad use, negligence or maintenance not made by technician authorized by the maker, will imply in the loss of the warranty.

## **FINAL CONSIDERATIONS**

---

The most important aspect related to equipment care is that concerning spare parts.

To guarantee the life span of your equipment, use only **original Gnatus spare parts**. They are sure to follow the technical specifications and standards required by Gnatus.

We must also point out to you our chain of authorized dealers. Only dealers that make part of this chain will be able to keep your equipment constantly new for they count on technical assistants who have been trained and on specific tools for the correct maintenance of your equipment.

Doubts and information: GNATUS Call center (55-16) 2102-5000.







Obelis S.A, Boulevard Général Wahis 53, 1030 Brussels, Belgium,  
Tel: +(32) 2 732-59-54 Fax: +(32) 2 732-60-03 E-mail: mail@obelis.net

NUM. REG. ANVISA: 10229030032

## CONHEÇA GET TO KNOW DESCUBRA

Peças de Mão Gnatus 32

As mais resistentes e  
silenciosas do mercado.

Gnatus 32 Hand Pieces

The market's most resistant  
and silent hand pieces.

Piezas de mano Gnatus 32

Las más resistentes y silenciosas  
del mercado.

Manufacturer/ Distributor:

# GNATUS

Technical Duties:

Gilberto Henrique Canesin Nomelini – CREA-SP: 0600891412



**EQUIPAMENTOS MÉDICO-ODONTOLÓGICOS LTDA.**

Rod. Abrão Assed , Km 53+450m - Cx. Postal 782

CEP 14097-500 - Ribeirão Preto - S.P. - Brasil

Fone (16) 2102-5000 - Fax (16) 2102-5001

C.N.P.J. 48.015.119/0001-64 - Insc. Est. 582.329.957.115

[www.gnatus.com.br](http://www.gnatus.com.br) - [gnatus@gnatus.com.br](mailto:gnatus@gnatus.com.br)